

PROTECT ME

Design by TrendSetter Iulia Postica

PATTERN OF
THE MONTH

MATERIALS NEEDED

- 53 CzechMates® Beam™
- 6 CzechMates® Cabochon
- 4g 11° TOHO Seed Beads
- 2 Jump Rings
- Clasp of Choice
- TOHO One-G Thread

COLORWAYS: Silver: CzechMates Beam Silver (397-210-27000); CzechMates Cabochon Matte Turquoise (396-06-M6313); TOHO 11° Round Bronze (TR-11-221).



About the Artist



Iulia Postica

I've been crocheting and knitting ever since I remember. I studied history and archaeology. Nine years ago I have developed a passion for beadwork and my life has greatly changed. Bead crochet is where I started, but I also love beadweaving and bead embroidery. I adore the variety of bead shapes and colors inspire me to create new designs. I currently focus on making beading patterns. Visit <http://BeadedTreasury.Blogspot.md>

STARMAN
TRENDSETTERS



www.StarmanInc.com
(888) 683-BEAD [2323]

a geometric bracelet featuring

CZECH The Building Blocks of Modern Beading MATES

Protect Me

by TrendSetter Iulia Postica

Copyright 2017 © Starman, Inc. and Artist.
Not licensed for digital distribution. Version 1.0

STARMAN
TRENDSETTERS

INTRODUCING THE CZECHMATES® 3-HOLE BEAM™

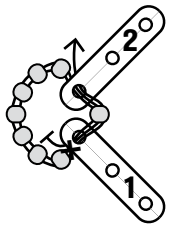
The latest addition to the Building Blocks of Modern Beading® is the Beam™. Use this unique 3-hole bead to create motifs that suspend, extend, and intersect within your designs.

INSTRUCTIONS

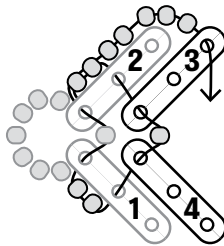
- Note: Always pick up the CB from a side hole unless instructed to pick up from the center hole.

Segment 1: On a comfortable length of thread, add CB-1, S11, CB-2, seven S11. Form a ring and tie a knot against the tail. Pass through all beads again. Pass through CB-1, S11, CB-2.

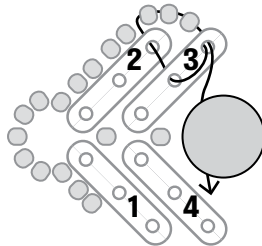
- Add two S11, pass through the center hole of CB-2, add CB-3, S11, CB-4, then pass through the center hole of CB-1. Add two S11, then pass through the CB-1 hole towards the center of the bracelet, S11, the adjacent hole of CB-2, two S11. Add five S11 then pass through the outer hole of CB-3.
- Jump to the center hole of CB-3, then pass into the adjacent outer hole of CB-2 and the three S11. Pass into the outer hole of CB-3 again, then add CC-Right.



Step 1

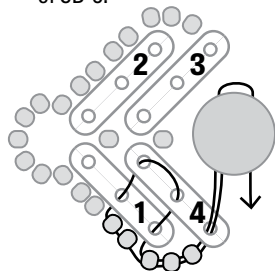


Step 2

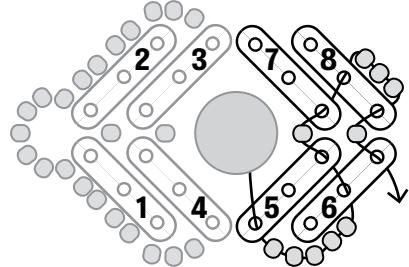


Step 3

- Pass through the adjacent hole of CB-4. Add three S11, then pass into CB-1 from the outside edge of the bracelet. Pass through the center hole of CB-4, then jump to its hole that is oriented towards the center of the bracelet. Continue passing through the center hole of CB-1. Add two S11, then pass through the three S11, and the adjacent hole of CB-4. Pass back through the CC, then jump to its second hole.
- Add CB-5, five S11, CB-6 (center hole), then pass through the open outer hole of CB-5. Add S11, CB-7, CB-8 (center hole), three S11, then pass through an outer hole of CB-8. Add S11, then pass through an open hole of CB-6.



Step 4

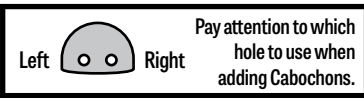


Step 5

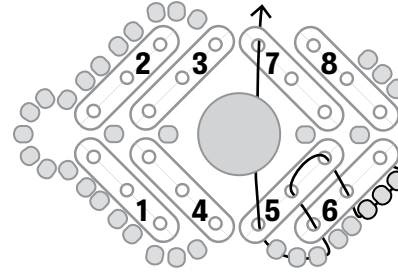
MATERIALS

- 53 CzechMates® Beam™ (CB)
- 6 CzechMates® Cabochon (CC)
- 4g 11° TOHO Seed Beads (S11)
- 2 Jump Rings
- Clasp of Choice
- TOHO One-G Thread

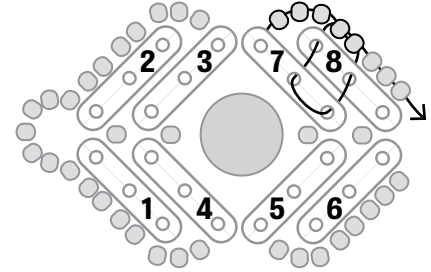
Bracelet measures approx. 7½" before clasp. Each segment is approx. 1¼" long. Minor adjustments to the length can be made with S11 at the clasp ends.



- Add three S11, then pass through the center hole of CB-6 and the adjacent hole of CB-5. Jump to the center hole of CB-5, then continue passing through the CB-6, three S11, CB-5, CC, CB-7, as shown.
- Add five S11, then pass through the center hole of CB-8, the adjacent hole of CB-7. Jump to the center hole of CB-7, then continue passing through the adjacent hole of CB-8. Pass through the five S11 along the outside edge of CB-8.



Step 6



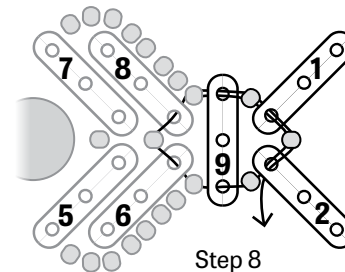
Step 7

- Add CB-9, S11, CB-1, S11, CB-2, S11. Pass through the open outer hole of CB-9, then pass through S11, the adjacent hole of CB-6, S11, the adjacent hole of CB-8, and the S11 you started at in this step. Continue passing through CB-9, S11, CB-1, S11, CB-2 again, as shown.

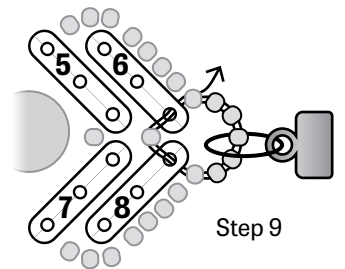
Segments 2-5: Repeat Steps 2-8 to add five more segments. Note that the thread path alternates direction after each segment. Follow the Beam numbering in the diagram to add beads in the correct sequence.

- Segment 6:** a) Repeat Steps 2-7 to add one more segment. Instead of adding CB-9 as in Step 8, add a loop of five seed beads to the end of the bracelet as shown. Reinforce the loop, then tie off.

b) Use jump rings to attach the clasp to the loops at both ends of the bracelet.



Step 8



Step 9

