



# DENALI CUFF

Design by TrendSetter Carole Ohl

PATTERN OF  
THE MONTH

## MATERIALS NEEDED

- 72 CzechMates® Beams™
- 17 CzechMates® Cabochon
- 2g TOHO 11° Round
- 1g TOHO 11° Demi Round
- 1 Two-Strand Bar Clasp
- 4 Jump Rings
- TOHO One-G Thread

**COLORWAYS:** Silver: CzechMates Beam Silver (397-210-27000); CzechMates Cabochon Bronze Luster Iris Opaque Red (396-06-R14415); TOHO 11° Round Gold-Lustered Montana Blue (TR-11-204); TOHO 11° Demi Round Nickel (TR-11-711). Green/Red: CzechMates Beam Persian Turquoise Bronze Picasso (397-210-BT6315); CzechMates Cabochon Opaque Red Picasso (396-06-T9320); TOHO 11° Round Bronze (TR-11-221); TOHO 11° Demi Round Metallic Iris Brown (TR-11-83).



## About the Artist

# Carole Ohl

I've had an artist's eye all my life, so naturally my profession as a freelance graphic designer is one I've enjoyed for over 30 years. I get to work with colors and shapes all day—what's not to love about that? I've been beading more than nine years, and have taught my own beadweaving designs since 2007. I love to teach and love to see what other people do with beads, and love the inspiration that is shared when people bead together! Visit [www.BeadStash.Blogspot.com](http://www.BeadStash.Blogspot.com)

STARMAN  
**TRENDSETTERS**



a dimensional bracelet featuring



[www.StarmanInc.com](http://www.StarmanInc.com)  
(888) 683-BEAD [2323]



# Denali Cuff

by TrendSetter Carole Ohl

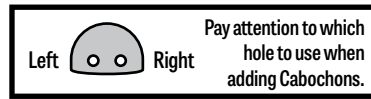
Copyright 2017 © Starman, Inc. and Artist.  
Not licensed for digital distribution. Version 1.0

STARMAN  
TRENDSETTERS

## MATERIALS

- 72 CzechMates® Beams™ (CB)
- 17 CzechMates® Cabochon (CC)
- 2g TOHO 11° Round (S11)
- 1g TOHO 11° Demi Round (D11)
- 1 Two-Strand Bar Clasp
- 4 Jump Rings
- TOHO One-G Thread

*Bracelet as instructed measures approx. 6.5" before clasp. Each additional segment adds approx. .33".*



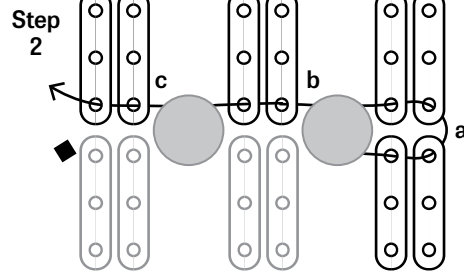
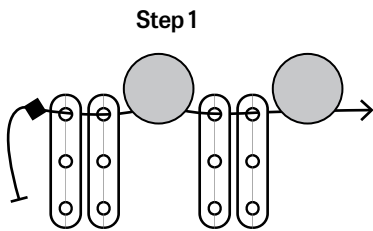
**INTRODUCING THE CZECHMATES® 3-HOLE BEAM™**  
The latest addition to the Building Blocks of Modern Beading® is the Beam™. Use this unique 3-hole bead to create motifs that suspend, extend, and intersect within your designs.

## INSTRUCTIONS

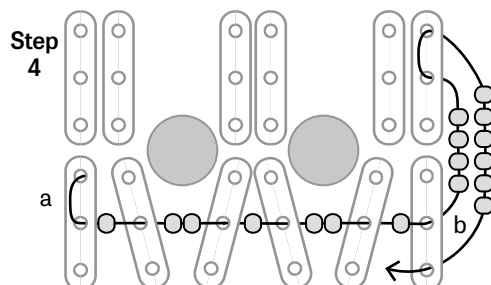
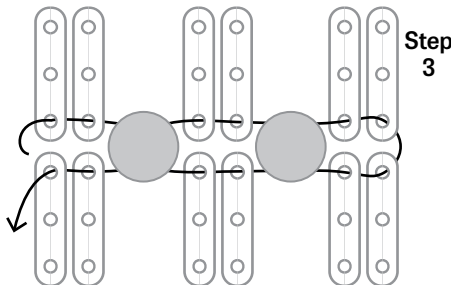
- Note: Always pick up the CB from a side hole unless instructed to pick up from the center hole.

Add a stop bead to the center of 3yd of thread. Add two CB, one CC-Right. Repeat for a total of 17 CC.

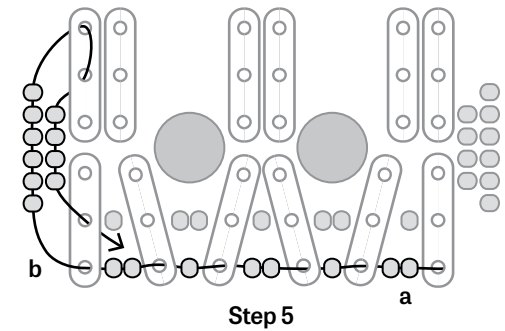
- Add four CB then pass through the open hole of the last CC added.
  - Add two CB, then pass through the open hole of the adjacent CC. Repeat Step 2b for the length.
  - Add two CB.



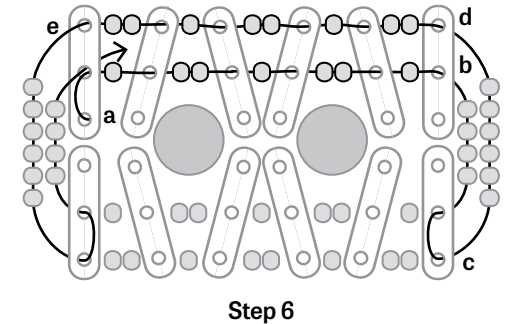
- Remove the stop bead and put your needle on the other tail thread. [Do not tie off the first thread.] Use the tail thread to pass back through all beads from the first two steps to add strength and balance the tension.
- Jump to the center hole of CB. Add S11, then pass through the center hole of the next CB. Add two S11, then pass through the center hole of the next CB. Repeat adding S11 in this manner until exiting the CB at the end.
  - Add four S11, then pass through the center hole of the CB on the second side of the bracelet. Jump to the open hole of CB. Add six S11 then pass through the open hole on the first side of the bracelet.



- Add two S11, then pass through the open hole of the next CB. Add one S11, then pass through the hole of the next CB. Repeat adding S11 in this manner until exiting the CB at the end.
  - Add six S11, then pass through the open hole of the CB on the second side of the bracelet. Jump to the center hole of CB. Add four S11, then pass through the center hole of the CB on the first side of the bracelet. Tie off this thread, then put your needle on the remaining thread.



- Jump to the center hole of the CB. Repeating adding S11 as in Step 4 for the second side of the bracelet.
  - Pass through four S11, the center hole of the adjacent CB, then jump to its outer hole along the edge of the bracelet.
  - Pass through six S11, then the outer hole of the CB along the second edge of the bracelet.
  - Add S11 between each CB as in Step 5a.
  - Pass through the six S11 and the outer hole of the CB along the edge of the bracelet. Jump to the center hole of the CB, then pass through the four S11 and the center hole of the adjacent CB. Tie-off.



- Add a stop bead to the center of 2yd of thread. Pass through the outer holes of the two CB at the end of the bracelet that are positioned at the center of the bracelet as shown. Pass through CC, then the corresponding holes of the next two CB.
  - Add three D11, then pass through the adjacent holes of the two CB across the center of the bracelet. Add three D11, then pass through the CB across the center of the bracelet again. Pass through the next CC, and two CB.

Repeat adding Demi in this manner for the length. Use remaining thread to reinforce the S11s on the sides. Tie off.

  - Attach the clasp to the six S11 at the ends using the jump rings. Note the orientation of the clasp so that it closes properly.

